

OFFICE

re-entry

RESILIENCE IN THE WORKPLACE

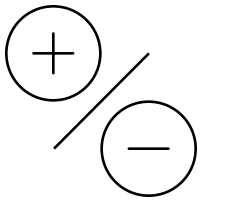


# We can adapt together.

Ankrom Moisan has spent decades designing workplaces that support wellness and empower people to do their best work. With you, we can bring people back to a workplace that's happier, more productive, and healthier.

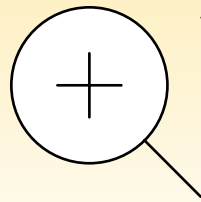
---

# We're here to help.



Adapt

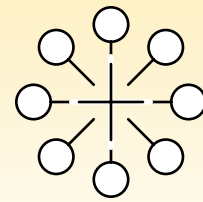
# Our design process for the next normal.



---

## Learn

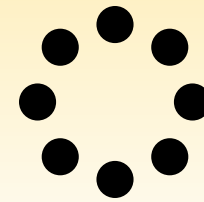
Understand your employees' needs, challenges, risks, and opportunities of returning to the workplace.



---

## Plan

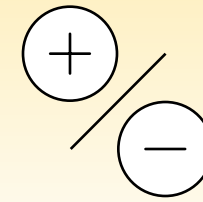
Define a plan that prioritizes your culture, business strategies, clients, and employees' well-being.



---

## Implement

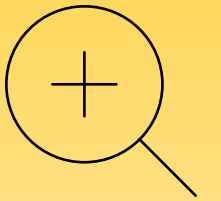
Be willing to follow through by integrating the right tools, resources, and communication plans.



---

## Adapt

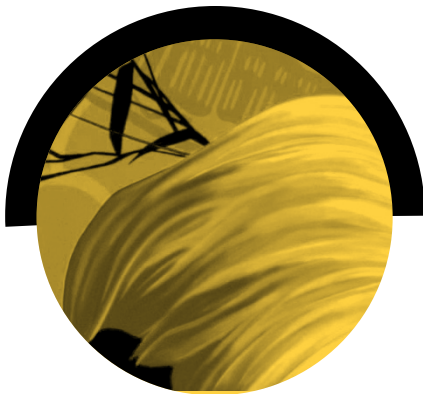
Adapt to each new reality, observing and adjusting as things shift—now, near-term, and in the future.



Learn

We surveyed 300+ people about returning to their workplace.

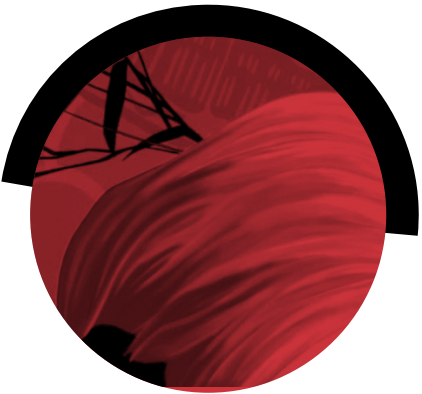
# INVEST IN WELLBEING



50%

*cited concern about personal wellbeing when using conference rooms*

# REDEFINE CONNECTION



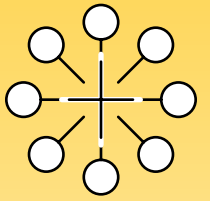
52%

of survey respondents want to come to the office to connect in person with their colleagues

# FORTIFY TRUST



build trust by providing meeting solutions that address employee concerns, adhere to health and safety guidelines and provide opportunities that allow people to opt in digitally when needed



Plan

With the right plan, we can do this.

We offer everything from full re-entry strategy and design to a quick set of construction drawings for minor modifications.

---

## CONSULTING

Re-entry social distance planning and communication plans ▪ Change management ▪ Employee experience advisement ▪ Updating guidelines and standards

## PLANNING

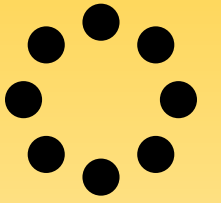
Space planning ▪ Flow diagrams to assist protocol, travel, and distancing needs ▪ Occupancy plans ▪ Sanitation and hygiene station placement

## MOVE, ADD, CHANGES

Furniture consulting ▪ Infrastructure updates ▪ Expedited permitting drawings ▪ Environmental graphic design and signage procurement ▪ Specifications for material or technology changes ▪ Security desk and PPE station design ▪ Barrier installations

## DESIGN AND CONSTRUCTION

Permitting and construction drawings for space modifications ▪ Demising permit drawings for subleases ▪ Mechanical and plumbing review and updates



Implement

# We're committed to healthier workplaces.

Working quickly and cost-effectively, we can design and implement strategies that help people feel safe about re-entering the workplace—and help our clients safely transition to a new workplace reality.

---

## NOW

Sanitation ▪ Spacing recommendations ▪  
Flow analysis ▪ Defining access limitations ▪  
Environmental graphics ▪ Communication plan ▪  
Monitoring and screening ▪ Change management  
resources • Temporary barriers

## NEAR-TERM

Touchless technology ▪ Furniture modifications ▪  
Long-term barrier solutions ▪ Minor architectural  
reconfigurations ▪ Infrastructure updates ▪  
Mechanical and plumbing updates

## FUTURE

AI integration ▪ Major architectural  
reconfigurations ▪ Material updates ▪  
Strategy development and planning



## WORKPLACE CONTACTS

---

### PORTLAND

Bethanne Mikkelsen  
[bethannem@ankrommoisan.com](mailto:bethannem@ankrommoisan.com)  
(503) 952-1593

Michael Stueve  
[michaels@ankrommoisan.com](mailto:michaels@ankrommoisan.com)  
(503) 892-8382

### SEATTLE

Heather Hayes  
[heatherh@ankrommoisan.com](mailto:heatherh@ankrommoisan.com)  
(206) 576-1654

Amanda Morono  
[amandam@ankrommoisan.com](mailto:amandam@ankrommoisan.com)  
(206) 576-3091