

# Design for Living: Mid-Rise

2020



Ankrom Moisan

# Ankrom Moisan

**OFFICE**  
**HOUSING**  
**SENIOR LIVING**  
**HIGHER EDUCATION**  
**HOSPITALITY**  
**HEALTHCARE**  
**COMMUNITY**  
**RETAIL**

Our expertise is rooted in diversity. We cross-pollinate innovations across markets—from office to hospitality—to make every project stronger.

We work with you, from Interiors to Architecture to Planning to Brand, to create purposeful and contextually rich places and experiences.



# Mid-Rise Housing

---

Place-making on a human scale.

Place-changing on a neighborhood scale.



Think about the cities you love, about meandering through their neighborhoods and feeling how they reflect their specific place and people. Multifamily housing is woven throughout many of those neighborhoods. Our architects understand this, working to help transform communities through excellent mid-rise housing design. For over three decades, we've excelled in designing innovative multifamily housing that balances creative, forward-thinking ideas with value-focused technical solutions. Our mid-rise projects are more than a collection of great units. They connect people to each other and to their city. Working with you, housing lets us shape neighborhoods and community experiences. Let's start this journey together.





**TRADEMARK**  
LOS ANGELES, CA

MacFarlane

492,052 sq. ft.

8 stories

313 units

**APARTMENTS**

ARCHITECTURE

INTERIORS











**LOCA**  
**aka GOAT BLOCKS**  
PORTLAND, OR

Killian Pacific  
394,920 sq. ft.  
6 stories  
240 units

**APARTMENTS**  
ARCHITECTURE  
INTERIORS  
PLANNING











**CCC BLACKBURN CENTER**  
PORTLAND, OR

Central City Concern

112,333 sq. ft.

6 stories

151 units

**AFFORDABLE HOUSING**

**HEALTHCARE**

ARCHITECTURE

INTERIORS

PLANNING







**THE ABIGAIL**  
PORTLAND, OR

BRIDGE Housing Corporation

186,000 sq. ft.

6 stories

155 units

**AFFORDABLE HOUSING**

ARCHITECTURE

INTERIORS

PLANNING











**ALTA PEAK**  
PORTLAND, OR

Wood Partners  
154,480 sq. ft.  
8 floors  
138 units

**APARTMENTS**  
ARCHITECTURE  
INTERIORS





Design for Living: Mid-Rise





**AEGIS MERCER ISLAND**

MERCER ISLAND, WA

Aegis Senior Living Communities, LLC

89,541 sq. ft.  
(including 10,312 sq. ft. parking garage)

4 stories

89 units

**SENIOR HOUSING**

ARCHITECTURE

INTERIORS











**CHLOE ON MADISON**  
SEATTLE, WA

Equity Residential

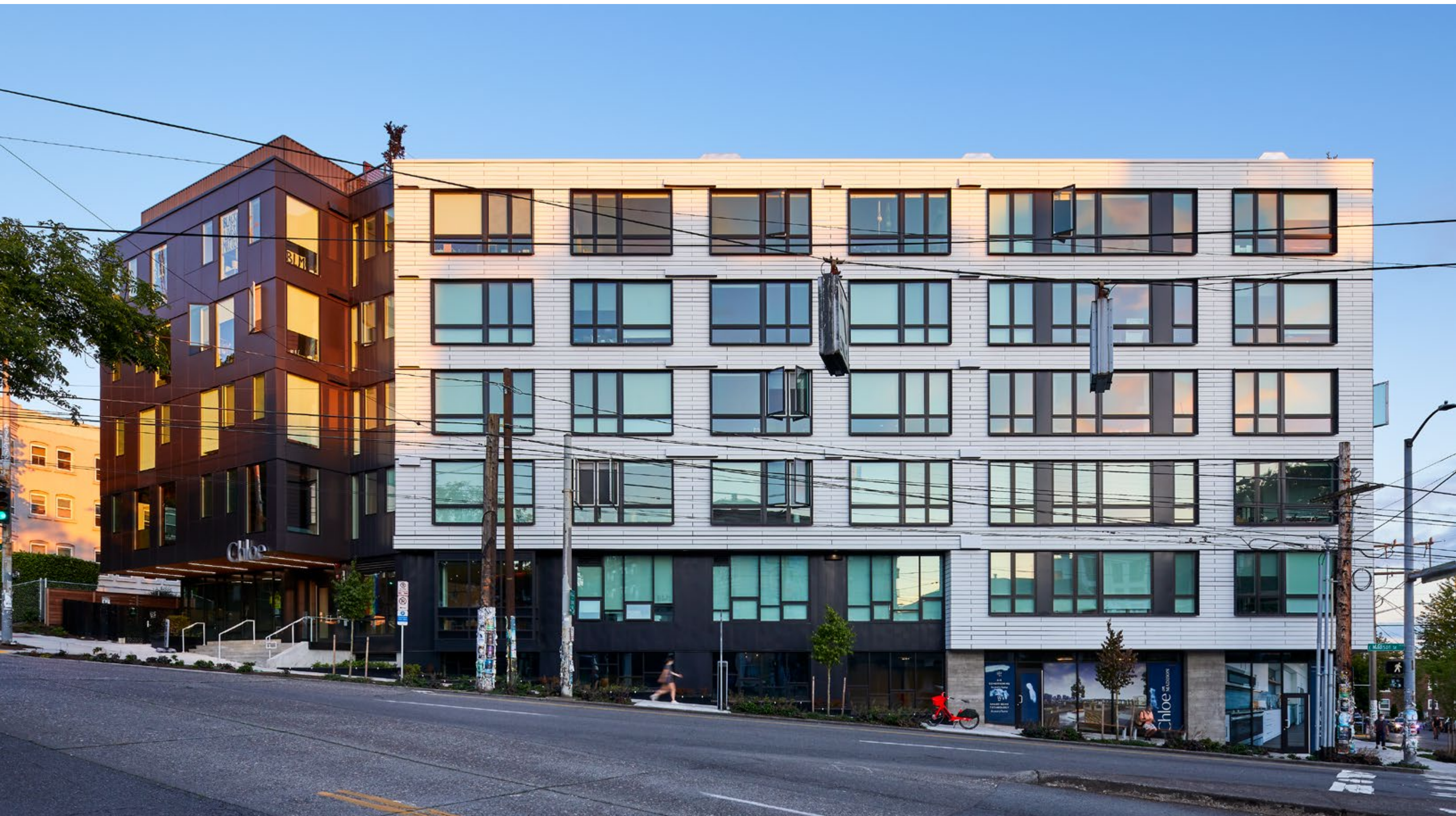
148,500 sq. ft.

6 stories

137 units

**APARTMENTS**  
ARCHITECTURE







**AVA CAPITOL HILL**  
SEATTLE, WA

Avalon Bay Communities

320,000 sq. ft.

7 stories

249 units

**HOUSING: APARTMENTS**  
ARCHITECTURE







Design for Living: Mid-Rise











**LEEWARD APARTMENTS**  
SEATTLE, WA

Shea Properties LLC

265,000 sq. ft.

11 stories

300 units

**APARTMENTS**

ARCHITECTURE

INTERIORS











**BERYL APARTMENTS**  
SEATTLE, WA

Tarragon Development Co. LLC

78,062 gross sq. ft.

6 stories

88 units

**APARTMENTS**  
ARCHITECTURE





# On the Boards



**AMARA**  
PORTLAND, OR

Lennar Multifamily Inverstors (LMC)  
67,836 sq. ft.  
7 stories  
138 units

**APARTMENTS**  
ARCHITECTURE











## **VERSO**

PORTLAND, OR

Rembold Properties, LLC

162,000 sq. ft.

5 stories

172 units

## **APARTMENTS**

ARCHITECTURE







**AEGIS LAKE UNION**  
SEATTLE, WA

Aegis Senior Living Communities, LLC  
73,322 sq. ft.  
6 stories  
79 units

**SENIOR HOUSING**  
ARCHITECTURE







**THE STANDARD**  
SEATTLE, WA

Landmark Properties

37,000 sq. ft.

7 stories

24 units

**STUDENT HOUSING**

ARCHITECTURE

INTERIORS







**4747 CALIFORNIA**  
SEATTLE, WA

HB Management  
000 sq. ft.  
7 stories  
73 units

**APARTMENTS**  
ARCHITECTURE











## **SIXTH AND JACKSON**

SAN JOSE, CA

Shea Properties

808,130 sq. ft.

6 stories

518 units

## **APARTMENTS**

ARCHITECTURE







# Mid-Rise Apartments

- FRESNO, CA**  
Crossings of Fresno
- LOS ANGELES, CA**  
Trademark
- OAKLAND, CA**  
MacArthur Commons
- SACRAMENTO, CA**  
L Street Lofts
- SAN FRANCISCO, CA**  
1650 Broadway  
Channel Apartments  
Mason on Mariposa
- SAN JOSE, CA**  
AvalonBay West Valley  
Japantown San Jose  
Leváre at Santana Row  
Misora Santana Row
- SAN LEANDRO, CA**  
La Vereda San Leandro
- BOZEMAN, MT**  
Bozeman Village
- RENO, NV**  
The Village at Idlewild Park
- BEAVERTON, OR**  
The Rise Central  
The Rise Old Town
- BEND, OR**  
Seasons at Farmington  
Reserve
- CHARBONNEAU, OR**  
Springridge Court
- EUGENE, OR**  
Eugene Market District
- GRANDE RONDE, OR**  
Grande Ronde Tribal Housing

- HILLSBORO, OR**  
Orenco Garden Apartments
- LAKE OSWEGO, OR**  
The Windward
- NEWBERG, OR**  
Newberg Apartments
- PORTLAND, OR**  
10th & Hoyt  
Alta Peak  
Amara Portland  
Arlo  
Ashcreek Commons  
Bridgeport Condominiums  
Burnside 105  
CCC Blackburn Center  
Chown Pella Lofts  
Corso  
Grand + Belmont  
Gray's Landing  
Lents Oliver Station  
Little Loca  
Loca Goat Blocks  
Lovejoy Station  
Marshall Wells Lofts  
Marvel 29  
Matisse  
McKenzie Lofts  
Milano  
Montessa  
North Williams  
Perch PDX (confirm)  
Ramona  
Riverstone Condominiums  
Sitka  
Tanner Place  
The Abigail  
The Addy  
The Jeffrey  
The Vaux  
Westview Heights

- SALEM, OR**  
Meridian Apartments
- SHERWOOD, OR**  
Cannery Row
- BELLEVUE, WA**  
Avalon Towers Bellevue  
Hyde Square Apartments
- KIRKLAND, WA**  
Athene  
Francis Village
- REDMOND, WA**  
AVA Esterra Park  
Avalon Esterra Park  
Esterra Park Block 8
- SEATTLE, WA**  
4747 California  
AVA Ballard  
AVA Capitol Hill  
Avalon Belltown (name?)  
Barclay Broadway  
Beryl Apartments  
Boxcar Seattle WA  
Broadstone Infinity  
Chloe Apts  
Chroma Apts  
Hue  
Mark on 8th  
Othello Station  
Rivet  
The Leeward  
Three20 Apartments
- SPOKANE, WA**  
Upper Falls Condos
- VANCOUVER WA**  
Vancouver Waterfront  
Parcel 6







Housing for people.



